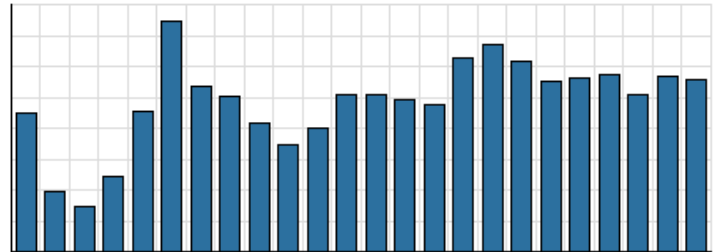


Monthly Stats Brief Narrative

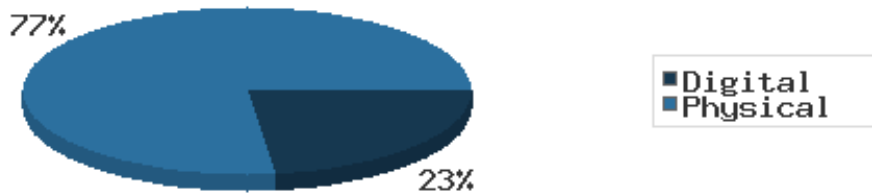
Through February 2022, the number of patrons entering our buildings greatly increased system-wide compared to this same time year-to-date the previous year. Combined physical and digital use of library materials increased year-to-date compared to 2021. About 6% of our registered cardholders checked out a physical item this past month, while about 2% of registered cardholders checked out a digital item.

District Total Checkouts Over 24 Months



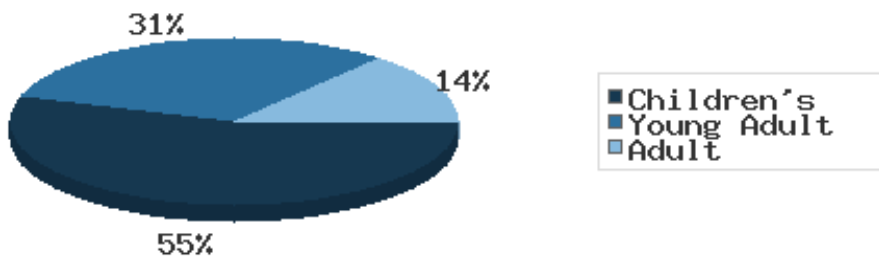
Digital usage has comprised about 23% of total materials use year-to-date through February 2022, and digital usage decreased from this time in 2021.

Digital vs. Physical Circulation YTD



In February 2022, BDL patrons saved \$99,054.98 by checking out 8,520 physical items from the library. Our programming for all ages and our digital services further increase the library's value to the community, bringing the total estimated value to \$123,467.33.

Programs Offered in 2022 YTD



Compared to this time year-to-date 2021, the number of programs BDL offered has greatly increased. Attendance at programs somewhat decreased over this same period.

See the full statistical report, starting on the next page, for details and more graphs. The most up-to-date stats are always available online and interactive at <https://www.BranchDistrictLibrary.org/stats>.

Attendance

February 2022

	BDL Monthly Total	BDL YTD	BDL Year End (Year-over-Year Change)				
			2021	2020	2019	2018	2017
Attendance	6,173	12,927 (+146%)	76,553 (+21%)	63,336 (-66%)	183,677 (-4%)	191,866 (-1%)	193,922 (-4%)
Curbside Service Uses (Tracking since 2020)	14	24	14	0	0	0	0
Hours Open	860.00	1,604.50 (+56%)	10,569.00 (+48%)	7,132.50 (-37%)	11,250.25 (-9%)	12,387.00 (+14%)	10,869.15 (0%)
Number of Hours Scheduled Open Each Week (Tracking Since 1/2018)	239.00		239.00 (+1%)	237.00 (-2%)	241.00 (-2%)	245.00	0.00

Patrons

February 2022

	BDL Monthly Total	BDL YTD	BDL Year End (Year-over-Year Change)				
			2021	2020	2019	2018	2017
Population in our Service Area (Tracking Since 2018)	46,464	45,712 (avg) (+2%)	44,996 (avg) (+0%)	44,931 (avg) (0%)	45,093 (avg) (0%)	45,113 (avg)	0 (avg)
Library Card Holders	22,850	22,843 (avg) (+4%)	22,337 (avg) (+5%)	21,365 (avg) (+4%)	20,493 (avg) (-4%)	21,350 (avg) (-16%)	25,346 (avg) (+3%)
Patrons Who Checked Out a Physical Item	1,473	1,492 (avg) (+47%)	1,359 (avg) (+23%)	1,102 (avg) (-48%)	2,136 (avg) (-2%)	2,180 (avg) (-5%)	2,305 (avg) (-1%)
New Library Card Holders Added	41	103 (+124%)	732 (-44%)	1,304 (+111%)	618 (-39%)	1,021 (+21%)	844 (-15%)
In-House Holds Filled for Our Library Card Holders	950	1,895 (-22%)	10,696 (+13%)	9,467 (-10%)	10,527 (-4%)	10,987 (-6%)	11,650 (+12%)
Active Hoopla Users	301	311 (avg) (-3%)	291 (avg) (-10%)	322 (avg) (+11%)	290 (avg) (+14%)	255 (avg) (+50%)	170 (avg) (+92%)
Active OverDrive Users	243	249 (avg) (+11%)	223 (avg) (-5%)	234 (avg) (+10%)	213 (avg) (+18%)	180 (avg) (+27%)	143 (avg) (-1%)

Physical Collection

Tracking Item-Type Breakdown Since 8/2017

February 2022

	BDL Monthly Total	BDL YTD	BDL Year End (Year-over-Year Change)				
			2021	2020	2019	2018	2017
Physical Books and All other Print Materials in the Catalog	92,672		91,417 (+0%)	91,278 (-8%)	98,689 (-2%)	100,253 (0%)	100,293
Physical Audiobooks in the Catalog	1,897		1,875 (-4%)	1,949 (+9%)	1,783 (-5%)	1,881 (+2%)	1,852
Physical Video Materials in the Catalog	11,819		11,646 (+3%)	11,352 (-1%)	11,460 (+8%)	10,579 (+1%)	10,519
Physical Music Recordings in the Catalog	42		42 (-76%)	178 (+12%)	159 (-53%)	337 (-2%)	345
TOTAL Physical Items in the Catalog	106,430		104,980 (0%)	105,257 (-6%)	112,053 (-1%)	113,050 (+0%)	113,009 (-11%)

Digital Collection

Tracking Since 8/2017

February 2022

	BDL Monthly Total	BDL YTD	BDL Year End (Year-over-Year Change)				
			2021	2020	2019	2018	2017
Ebooks in All Digital Collections	658,061		648,146 (+35%)	480,691 (+30%)	370,666 (+21%)	306,595 (+33%)	230,178
Audiobooks in All Digital Collections	165,467		162,946 (+26%)	128,892 (+50%)	86,004 (+19%)	71,995 (+36%)	52,833
Video Materials in All Digital Collections	23,570		22,520 (+27%)	17,791 (+9%)	16,267 (+14%)	14,229 (-10%)	15,767
Music Recordings in All Digital Collections	297,398		21,347 (-92%)	273,294 (+1%)	271,614 (+13%)	239,705 (-14%)	280,259
Periodicals in All Digital Collections	4,014		3,881 (+6%)	3,668	0	0	0
TOTAL of All Digital Collections	1,148,510		858,840 (-5%)	904,336 (+21%)	744,551 (+18%)	632,524 (+9%)	579,037

Total Collection

Tracking Since 8/2017

February 2022

	BDL Monthly Total	BDL YTD	BDL Year End (Year-over-Year Change)				
			2021	2020	2019	2018	2017
Combined Physical Items	106,430		104,980 (0%)	105,257 (-6%)	112,053 (-1%)	113,050 (+0%)	113,009 (-11%)
Combined Digital Collections	1,148,510		858,840 (-5%)	904,336 (+21%)	744,551 (+18%)	632,524 (+9%)	579,037
TOTAL of all Collections	1,250,926		959,939 (-5%)	1,009,593 (+18%)	856,604 (+15%)	745,574 (+8%)	692,046 (+447%)

Use of Physical Items

February 2022

	BDL Monthly Total	BDL YTD	BDL Year End (Year-over-Year Change)				
			2021	2020	2019	2018	2017
Checkouts of Cataloged Items	6,178	12,550 (+50%)	68,460 (+31%)	52,227 (-53%)	110,285 (-3%)	113,128 (-6%)	120,916 (+2%)
Renewals of Cataloged Items	985	1,768 (+39%)	8,639 (+20%)	7,181 (-47%)	13,490 (-1%)	13,607 (-8%)	14,804 (-4%)
Items Used in the Library But Not Checked Out	284	548 (+25%)	2,350 (-63%)	6,404 (+54%)	4,166 (+49%)	2,803 (-8%)	3,050 (+126%)
Checkouts of Uncataloged Items	58	186 (+148%)	1,505 (+50%)	1,001 (-70%)	3,294 (-16%)	3,904 (+38%)	2,839 (-38%)
Requests from BDL Patrons for Items at Other MeLCat Libraries, Actually Fulfilled	513	1,149 (-1%)	6,981 (+52%)	4,599 (-53%)	9,873 (+1%)	9,777 (+20%)	8,169 (+15%)
Requests from Other MeLCat Libraries for Items at BDL, Actually Fulfilled	502	1,093 (+30%)	5,712 (+80%)	3,175 (-58%)	7,582 (-23%)	9,810 (+25%)	7,867 (+11%)
TOTAL Use of Physical Items	8,520	17,294 (+43%)	93,647 (+26%)	74,587 (-50%)	148,690 (-3%)	153,029 (-3%)	157,645 (+2%)

Use of Digital Resources

February 2022

	BDL Monthly Total	BDL YTD	BDL Year End (Year-over-Year Change)				
			2021	2020	2019	2018	2017
OverDrive Checkouts	1,123	2,353 (+15%)	13,294 (+2%)	13,051 (+21%)	10,822 (+14%)	9,501 (+21%)	7,823 (+4%)
Hoopla Checkouts	1,044	2,125 (-5%)	12,507 (-8%)	13,604 (+9%)	12,530 (-2%)	12,796 (+20%)	10,669 (+96%)
All Other Digital Services	493	766 (-49%)	10,131 (+42%)	7,140 (-33%)	10,604 (+11%)	9,572 (-72%)	34,047 (-46%)
TOTAL Use of Digital Resources	2,660	5,244 (-13%)	36,284 (+4%)	34,861 (+3%)	33,956 (+7%)	31,869 (-39%)	52,539 (-31%)

Total Item Usage

February 2022

	BDL Monthly Total	BDL YTD	BDL Year End (Year-over-Year Change)				
			2021	2020	2019	2018	2017
Combined Checkouts of Physical Items	8,520	17,294 (+43%)	93,647 (+26%)	74,587 (-50%)	148,690 (-3%)	153,029 (-3%)	157,645 (+2%)
Combined Use of Digital Resources	2,660	5,244 (-13%)	36,284 (+4%)	34,861 (+3%)	33,956 (+7%)	31,869 (-39%)	52,539 (-31%)
TOTAL Uses of All BDL Items	11,180	22,538 (+24%)	129,931 (+19%)	109,448 (-40%)	182,646 (-1%)	184,898 (-12%)	210,184 (-9%)

Cataloging

February 2022

	BDL Monthly Total	BDL YTD	BDL Year End (Year-over-Year Change)				
			2021	2020	2019	2018	2017
Physical Items Added to the Catalog	850	1,664 (-15%)	11,665 (+17%)	9,938 (+2%)	9,719 (-12%)	11,056 (+0%)	11,009 (-1%)
Physical Items Deleted from the Catalog	181	227 (-91%)	16,482 (-3%)	17,003 (+58%)	10,769 (-2%)	10,941 (-55%)	24,366 (+53%)

Reference Questions

February 2022

	BDL Monthly Total	BDL YTD	BDL Year End (Year-over-Year Change)				
			2021	2020	2019	2018	2017
General Reference Questions in Person	570	1,330 (+58%)	8,431 (+94%)	4,347 (-50%)	8,748 (+32%)	6,641 (-12%)	7,537 (+20%)
Questions via Telephone Calls	432	918 (-23%)	5,765 (+26%)	4,559 (+11%)	4,111 (+6%)	3,866 (-24%)	5,079 (+10%)
Reference Questions Delivered Online	21	48 (-35%)	275 (+13%)	243 (-14%)	281 (+85%)	152 (-35%)	233 (-23%)
In-Person Questions on Computer or Internet Use	234	499 (+39%)	3,675 (+33%)	2,767 (-63%)	7,505 (+6%)	7,068 (-3%)	7,285 (+11%)
In-Person Questions about Our Online Databases	0	7 (-81%)	142 (+33%)	107 (-69%)	349 (-15%)	409 (+13%)	363 (+114%)
In-Person Tax Form Questions	68	109 (-22%)	233 (-19%)	286 (-12%)	326 (-37%)	518 (+5%)	493 (+4%)
TOTAL of All Reference Questions	1,325	2,911 (+10%)	18,521 (+50%)	12,309 (-42%)	21,320 (+14%)	18,654 (-11%)	20,990 (+14%)

Notary Services

Began 9/2017

February 2022

	BDL Monthly Total	BDL YTD	BDL Year End (Year-over-Year Change)				
			2021	2020	2019	2018	2017
Patrons Who Used our Free Notary Services	7	12 (+200%)	69 (+50%)	46 (-52%)	95 (+44%)	66 (+371%)	14
Documents Notarized	13	20 (+56.7%)	112 (+107%)	54 (-56%)	124 (+85%)	67 (+253%)	19

MeLCat

February 2022

	BDL Monthly Total	BDL YTD	BDL Year End (Year-over-Year Change)				
			2021	2020	2019	2018	2017
Requests from BDL Patrons for Items at Other MeLCat Libraries	538	1,213 (-2%)	7,375 (+47%)	5,026 (-52%)	10,538 (+1%)	10,462 (+20%)	8,699 (+14%)
Requests from BDL Patrons for Items at Other MeLCat Libraries, Actually Fulfilled	513	1,149 (-1%)	6,981 (+52%)	4,599 (-53%)	9,873 (+1%)	9,777 (+20%)	8,169 (+15%)
Requests from Other MeLCat Libraries for Items at BDL	505	1,074 (+8%)	6,067 (+49%)	4,067 (-52%)	8,405 (-18%)	10,296 (+29%)	7,994 (+13%)
Requests from Other MeLCat Libraries for Items at BDL, Actually Fulfilled	502	1,093 (+30%)	5,712 (+80%)	3,175 (-58%)	7,582 (-23%)	9,810 (+25%)	7,867 (+11%)

Programs Held

February 2022

	BDL Monthly Total	BDL YTD	BDL Year End (Year-over-Year Change)				
			2021	2020	2019	2018	2017
Early Childhood Literacy Programs Held (Tracking since 2021)	17	41 (+215%)	116	0	0	0	0
Juvenile Programs Held	47	96 (+96%)	290 (-47%)	551 (-31%)	804 (+10%)	730 (+1%)	720 (+19%)
Young Adult Programs Held	26	54 (+184%)	131 (-5%)	138 (-55%)	304 (-10%)	338 (+41%)	239 (+47%)
Adult Programs Held	13	24 (-8%)	114 (-56%)	257 (+54%)	167 (+23%)	136 (-7%)	146 (-34%)
All-Ages Programs Held (Tracking since 2021)	5	11 (+267%)	80	0	0	0	0
Early Childhood Literacy Summer Reading Programs Held (Tracking since 2021)	0	0	9	0	0	0	0
Juvenile Summer Reading Events Held	0	0	96	0	173 (+52%)	114 (+20%)	95 (+7%)
Young Adult Summer Reading Events Held	0	0	25	0	61 (+24%)	49 (-14%)	57 (+97%)
Adult Summer Reading Events Held	0	0	27	0	17 (+467%)	3	0
All-Ages Summer Reading Programs Held (Tracking since 2021)	0	0	26	0	0	0	0
Computer Classes Held	0	0	1	1 (-99%)	81 (+305%)	20 (-9%)	22 (+57%)
TOTAL of All Programs	108	226 (+105%)	1,636 (+73%)	947 (-41%)	1,607 (+16%)	1,390 (+9%)	1,279 (+14%)

Program Attendance

February 2022

	BDL Monthly Total	BDL YTD	BDL Year End (Year-over-Year Change)				
			2021	2020	2019	2018	2017
Attendees at Early Childhood Literacy Programs (Tracking since 2021)	90	215 (-57%)	1,389	0	0	0	0
Attendees at Juvenile Programs	442	862 (+17%)	4,270 (-83%)	25,317 (+73%)	14,654 (-7%)	15,725 (+2%)	15,351 (+48%)
Attendees at Young Adult Programs	131	226 (+50%)	817 (-75%)	3,204 (+29%)	2,489 (-23%)	3,218 (-15%)	3,806 (+276%)
Attendees at Adult Programs	225	284 (-6%)	1,971 (-88%)	16,263 (+519%)	2,627 (+33%)	1,970 (0%)	1,979 (-3%)
Attendees at All-Ages Programs (Tracking since 2021)	86	140 (-15%)	4,547	0	0	0	0
Attendees at Early Childhood Literacy Summer Reading Programs (Tracking since 2021)	0	0	146	0	0	0	0
Attendees at Juvenile Summer Reading Events	0	0	1,798	0	4,186 (+8%)	3,864 (+24%)	3,116 (-20%)
Attendees at Young Adult Summer Reading Events	0	0	181	0	279 (-16%)	333 (-50%)	671 (+127%)
Attendees at Adult Summer Reading Events	0	0	179	0	310 (+265%)	85	0
Attendees at All-Ages Summer Programs (Tracking since 2021)	0	0	730	0	0	0	0
Attendees at Computer Classes	0	0	1	0	26 (+30%)	20 (-5%)	21 (+75%)
TOTAL of All Program Attendance	974	1,727 (-7%)	16,029 (-64%)	44,784 (+82%)	24,571 (-3%)	25,215 (+1%)	24,944 (+41%)

Summer Reading Overview

February 2022

	BDL Monthly Total	BDL YTD	BDL Year End (Year-over-Year Change)				
			2021	2020	2019	2018	2017
Juveniles Signed Up for Summer Reading Program	0	0	407 (+347%)	91 (-87%)	711 (-5%)	747 (-35%)	1,153 (+19%)
Young Adults Signed up for Summer Reading Program	0	0	77 (+166%)	29 (-78%)	134 (-65%)	378 (-2%)	385 (+241%)
Adults Signed Up for Summer Reading Program	0	0	122 (+270%)	33 (-79%)	159 (-36%)	248 (+112%)	117 (+36%)
Juveniles who Completed Summer Reading Program	0	0	220 (+142%)	91 (-76%)	385 (+48%)	260 (-50%)	518 (+13%)
Young Adults who Completed Summer Reading Program	0	0	38 (+31%)	29 (-63%)	79 (-41%)	135 (-50%)	268 (+332%)
Adults who Completed Summer Reading Program	0	0	30 (-9%)	33 (-72%)	118 (-28%)	165 (+72%)	96 (+60%)
Juvenile Summer Reading Events Held	0	0	96	0	173 (+52%)	114 (+20%)	95 (+7%)
Young Adult Summer Reading Events Held	0	0	25	0	61 (+24%)	49 (-14%)	57 (+97%)
Adult Summer Reading Events Held	0	0	27	0	17 (+467%)	3	0
Attendees at Juvenile Summer Reading Events	0	0	1,798	0	4,186 (+8%)	3,864 (+24%)	3,116 (-20%)
Attendees at Young Adult Summer Reading Events	0	0	181	0	279 (-16%)	333 (-50%)	671 (+127%)
Attendees at Adult Summer Reading Events	0	0	179	0	310 (+265%)	85	0

Summer Reading Program Signups

February 2022

	BDL Monthly Total	BDL YTD	BDL Year End (Year-over-Year Change)				
			2021	2020	2019	2018	2017
Juveniles Signed Up for Summer Reading Program	0	0	407 (+347%)	91 (-87%)	711 (-5%)	747 (-35%)	1,153 (+19%)
Young Adults Signed up for Summer Reading Program	0	0	77 (+166%)	29 (-78%)	134 (-65%)	378 (-2%)	385 (+241%)
Adults Signed Up for Summer Reading Program	0	0	122 (+270%)	33 (-79%)	159 (-36%)	248 (+112%)	117 (+36%)
TOTAL Summer Reading Program Signups	0	0	606 (+296%)	153 (-85%)	1,004 (-27%)	1,373 (-17%)	1,655 (+42%)

Summer Reading Program Completions

February 2022

	BDL Monthly Total	BDL YTD	BDL Year End (Year-over-Year Change)				
			2021	2020	2019	2018	2017
Juveniles who Completed Summer Reading Program	0	0	220 (+142%)	91 (-76%)	385 (+48%)	260 (-50%)	518 (+13%)
Young Adults who Completed Summer Reading Program	0	0	38 (+31%)	29 (-63%)	79 (-41%)	135 (-50%)	268 (+332%)
Adults who Completed Summer Reading Program	0	0	30 (-9%)	33 (-72%)	118 (-28%)	165 (+72%)	96 (+60%)
TOTAL Summer Reading Program Completions	0	0	288 (+88%)	153 (-74%)	582 (+4%)	560 (-37%)	882 (+52%)

Library-Provided Computer Services

February 2022

	BDL Monthly Total	BDL YTD	BDL Year End (Year-over-Year Change)				
			2021	2020	2019	2018	2017
One-hour sessions on Library Wifi	24,125	42,625 (-12%)	290,877 (+2%)	284,892 (-40%)	474,750 (+2%)	465,219 (+9%)	425,714 (+4%)
Desktop, Laptop, and Tablet Computers Available for Public Use	92		92 (+5%)	88	88 (-1%)	89 (+22%)	73
Sessions on Library-Provided Computers	885	1,992 (+207%)	11,926 (+24%)	9,604 (-73%)	35,720 (-22%)	45,687 (+3%)	44,181 (+6%)
Hours Library-Provided Computers Used (Tracking Since 2018)	517.50	1,309.26 (+285%)	6,735.18 (+12%)	6,031.58 (-75%)	24,280.36 (-2%)	24,701.55	0.00
Desktop, Laptop, and Tablet Computers Available for Staff Use	55		55 (+6%)	52	52 (+4%)	50 (+22%)	41

Website Stats

February 2022

	BDL Monthly Total	BDL YTD	BDL Year End (Year-over-Year Change)				
			2021	2020	2019	2018	2017
Monthly Website Sessions	3,035	6,657 (+0%)	46,481 (+12%)	41,586 (-28%)	58,161 (+28%)	45,594 (-38%)	73,326 (-2%)
Monthly Website Page Views	5,754	13,874 (-6%)	116,164 (+26%)	92,094 (-29%)	129,778 (+9%)	118,634 (-33%)	177,799 (-2%)

Faxes, Prints, and Sales

February 2022

	BDL Monthly Total	BDL YTD	BDL Year End (Year-over-Year Change)				
			2021	2020	2019	2018	2017
Fax Pages Received	0	3 (-80%)	141 (-5%)	149 (-57%)	350 (-16%)	419 (+61%)	260 (+19%)
Fax Pages Sent	630	1,142 (+90%)	6,515 (+66%)	3,935 (-59%)	9,524 (+3%)	9,249 (+138%)	3,879 (+123%)
Free Prints for Job Seekers, Students, etc.	889	3,896 (+4,710%)	3,222 (+195%)	1,091 (-61%)	2,796 (-23%)	3,631 (+16%)	3,128 (+9%)
Black and White Patron Prints (Tracking Since 6/2016)	3,989	8,612 (+28%)	55,206 (+66%)	33,177 (-56%)	75,818 (-6%)	81,016 (+7%)	75,606 (+113%)
Color Patron Prints (Tracking Since 6/2016)	618	622 (-7%)	9,731 (+107%)	4,709 (-58%)	11,299 (-8%)	12,285 (+20%)	10,253 (+154%)
Flash Drives Sold (Tracking Since 6/2016)	2	6 (+500%)	16 (-11%)	18 (-51%)	37 (-10%)	41 (-27%)	56 (+4%)
Earbuds Sold (Tracking Since 6/2016)	7	23 (+360%)	122 (-7%)	131 (-72%)	462 (-14%)	538 (+29%)	416 (+151%)

Fines and Fees

Overdue Fines Dropped in 2017

February 2022

	BDL Monthly Total	BDL YTD	BDL Year End (Year-over-Year Change)				
			2021	2020	2019	2018	2017
Fines and Fees Payments Received	\$ 203.85	\$ 412.45 (+38%)	\$ 1,409.59 (-18%)	\$ 1,717.01 (-44%)	\$ 3,092.62 (+28%)	\$ 2,412.73 (-68%)	\$ 7,628.31 (-24%)
Outstanding Fines and Fees	\$ 10,032.16		8,576.40 (-84%)	53,362.56 (-4%)	55,588.42 (0%)	55,850.27 (-34%)	84,232.33 (-63%)

Debt Collections

Unique Management Services, Inc.
Tracking Since 2014

February 2022

	BDL Monthly Total	BDL YTD	BDL Year End (Year-over-Year Change)				
			2021	2020	2019	2018	2017
Fine Payments as a Result of Collection Agency's Efforts	\$ 0.00	\$ 0.00	\$ 0.00	\$ 0.00	\$ 268.00 (-94%)	\$ 4,183.45 (+1,727%)	\$ 229.00 (-76%)
Library Materials Returned as a Result of Collection Agency's Efforts	\$ 0.00	\$ 0.00	\$ 0.00	\$ 0.00	\$ 0.00	\$ 462.00 (-48%)	\$ 888.95 (-33%)
What We Paid Collection Agency for Their Services	\$ 0.00	\$ 0.00	\$ 0.00	\$ 0.00	\$ 134.10 (-75%)	\$ 528.66 (-5%)	\$ 558.08 (-45%)

Value to Our Service Area

Visit <https://www.BranchDistrictLibrary.org/value>
to learn how we determine these numbers.

February 2022

	BDL Monthly Total	BDL YTD	BDL Year End (Year-over-Year Change)				
			2021	2020	2019	2018	2017
Value from Physical Item Checkouts	\$ 99,054.98	\$ 200,442.68 (+51%)	\$ 1,048,840.66 (+27%)	\$ 822,979.52 (-53%)	\$ 1,755,554.08 (-7%)	\$ 1,888,907.75 (-12%)	\$ 2,135,671.28 (+0%)
Value from Attending Programs (Tracking Since 1/2018)	\$ 6,349.00	\$ 11,417.00 (+26%)	\$ 78,390.00 (-38%)	\$ 126,690.00 (+7%)	\$ 118,485.00 (-6%)	\$ 125,795.00	\$ 0.00
Value from Fax Service (Tracking Since 1/2018)	\$ 630.00	\$ 848.00 (+39%)	\$ 6,534.00 (+61%)	\$ 4,056.00 (-60%)	\$ 10,205.00 (+6%)	\$ 9,668.00	\$ 0.00
Value from Free Prints (Tracking Since 1/2018)	\$ 133	\$ 441 (+3,909%)	\$ 443 (+173%)	\$ 163 (-61%)	\$ 419 (-23%)	\$ 545	\$ 0
Value from Notary Services (Tracking Since 1/2018)	\$ 35.00	\$ 50.00 (+150%)	\$ 320.00 (+42%)	\$ 225.00 (-53%)	\$ 475.00 (+44%)	\$ 330.00	\$ 0.00
Value from Digital Services (Tracking Since 1/2018)	\$ 13,300.00	\$ 26,220.00 (+9%)	\$ 145,136.00 (+5%)	\$ 138,316.00 (+2%)	\$ 135,824.00 (+7%)	\$ 127,476.00	\$ 0.00
Value from Using Library Computers (Tracking Since 1/2018)	\$ 1,552.50	\$ 3,927.78 (+285%)	\$ 20,205.54 (+12%)	\$ 18,094.74 (-75%)	\$ 72,841.08 (-2%)	\$ 74,104.66	\$ 0.00
Value from Using Library Wifi (Tracking Since 1/2018)	\$ 2,412.50	\$ 2,412.50 (-29%)	\$ 17,897.18 (-10%)	\$ 19,942.44 (-40%)	\$ 33,232.50 (+2%)	\$ 32,565.33	\$ 0.00
TOTAL Value of Free Library Services	\$ 123,467.33	\$ 245,759.11 (+44%)	\$ 1,317,766.78 (+17%)	\$ 1,130,466.45 (-47%)	\$ 2,127,036.06 (-6%)	\$ 2,259,391.39 (+6%)	\$ 2,135,671.28 (+0%)

Materials Expenditures

Tracking since 2018

February 2022

	BDL Monthly Total	BDL YTD	BDL Year End (Year-over-Year Change)				
			2021	2020	2019	2018	2017
Amount Spent on Books	\$ 7,562.12	\$ 13,735.82 (+22%)	\$ 108,851.89 (+27%)	\$ 85,727.68 (+12%)	\$ 76,878.30 (-18%)	\$ 93,763.50	\$ 0.00
Amount Spent on Periodicals	\$ 31.50	\$ 61.50 (-88%)	\$ 5,051.01 (-6%)	\$ 5,390.61 (-5%)	\$ 5,663.99 (-20%)	\$ 7,085.59	\$ 0.00
Amount Spent on Audiovisual Materials	\$ 1,114.92	\$ 1,804.13 (-23%)	\$ 23,646.40 (+39%)	\$ 16,992.04 (+13%)	\$ 15,009.96 (-17%)	\$ 17,998.47	\$ 0.00
Amount Spent on Digital Resources	\$ 2,063.68	\$ 7,115.68 (-23%)	\$ 42,439.73 (+34%)	\$ 31,708.66 (+12%)	\$ 28,412.62 (-35%)	\$ 43,798.90	\$ 0.00
TOTAL Spent on All Library Materials	\$ 10,772.22	\$ 22,717.13 (-3%)	\$ 179,989.03 (+29%)	\$ 139,818.99 (+11%)	\$ 125,964.87 (-23%)	\$ 162,646.46	\$ 0.00

Other Expenditures

Tracking since 2018

February 2022

	BDL Monthly Total	BDL YTD	BDL Year End (Year-over-Year Change)				
			2021	2020	2019	2018	2017
Total Materials Expenditures	\$ 10,772.22	\$ 22,717.13 (-3%)	\$ 179,989.03 (+29%)	\$ 139,818.99 (+11%)	\$ 125,964.87 (-23%)	\$ 162,646.46	\$ 0.00
Total Staff Expenditures	\$ 81,529.91	\$ 151,073.67 (-12%)	\$ 963,961.23 (+1%)	\$ 956,326.38 (-18%)	\$ 1,172,756.92 (-20%)	\$ 1,469,560.33	\$ 0.00
Expenditures in other categories	\$ 83,641.79	\$ 144,302.20 (+181%)	\$ 860,839.79 (+78%)	\$ 483,894.79 (+37%)	\$ 353,231.25 (-16%)	\$ 422,747.74	\$ 0.00
TOTAL Expenditures in all Categories	\$ 153,185.55	\$ 283,389.72 (+8%)	\$ 1,865,487.82 (+3%)	\$ 1,819,492.24 (+1%)	\$ 1,797,240.67 (-13%)	\$ 2,054,954.53	\$ 0.00

Staffing

February 2022

	BDL Monthly Total	BDL YTD	BDL Year End (Year-over-Year Change)				
			2021	2020	2019	2018	2017
Total BDL Staff	36	35 (avg) (-3%)	35 (avg) (-3%)	36 (avg) (-3%)	37 (avg) (-8%)	40 (avg) (+5%)	37 (avg) (+9%)
BDL Staff with MLS Degree	5	5 (avg)	5 (avg)	5 (avg) (+25%)	5 (avg) (-33%)	6 (avg) (+20%)	5 (avg) (+150%)
Worked Full-Time Equivalents	21.87	22.57 (avg) (-8%)	21.71 (avg) (-13%)	24.53 (avg) (-4%)	25.78 (avg) (-4%)	26.92 (avg) (+8%)	24.91 (avg) (+41%)
Hours of Specialized Training for Staff (Tracking Since 1/2019)	41	101 (-32%)	763 (-35%)	1,170 (+119%)	534	0	0
Hours Volunteers Worked at the Library (Tracking Since 1/2019)	8	8	128 (+228%)	39 (-96%)	1,065	0	0

Outreach Services

Began 2018

February 2022

	BDL Monthly Total	BDL YTD	BDL Year End (Year-over-Year Change)				
			2021	2020	2019	2018	2017
Number of Patrons Served by Outreach Services	12	26	120 (+186%)	42 (-40%)	70 (-8%)	76 (+2,433%)	3
Number of Items Delivered to Outreach Patrons	55	105 (+13%)	548 (+126%)	242 (+10%)	220 (-64%)	606 (+2,231%)	26

Coldwater Branch Heritage Room

Stats part of Coldwater Branch totals above; shown here for convenience.

February 2022

	Heritage Room	BDL YTD	BDL Year End (Year-over-Year Change)				
			2021	2020	2019	2018	2017
Heritage Room Attendance	18	52 (+333%)	202 (+92%)	105 (-78%)	484 (-34%)	736 (+12%)	658 (-7%)
In-Person Reference Questions	0	9 (+200%)	74 (-8%)	80 (-81%)	412 (-42%)	708 (+29%)	550 (+664%)
Reference Telephone Calls	4	16 (+33%)	115 (+92%)	60 (-74%)	232 (-16%)	277 (-36%)	433 (+15%)
Online Reference Questions	1	2 (-71%)	42 (+24%)	34 (-48%)	65 (+8%)	60 (-5%)	63 (-24%)

Coldwater Branch Kids' Place

Stats part of Coldwater Branch totals above; shown here for convenience.

Tracking separately since April 2019.

February 2022

	Kids' Place	BDL YTD	BDL Year End (Year-over-Year Change)				
			2021	2020	2019	2018	2017
Kids' Place Attendance	591	1,100 (+431%)	4,445 (+86%)	2,385 (-75%)	9,710	0	0
In-Person Reference Questions	84	192 (+111%)	740 (+227%)	226 (-61%)	575	0	0
Reference Telephone Calls	17	33 (-33%)	214 (+37%)	156 (-30%)	224	0	0
Online Reference Questions	0	0	2	0	0	0	0

Coldwater Branch Teen Space

Stats part of Coldwater Branch totals above; shown here for convenience.

Tracking separately since April 2019.

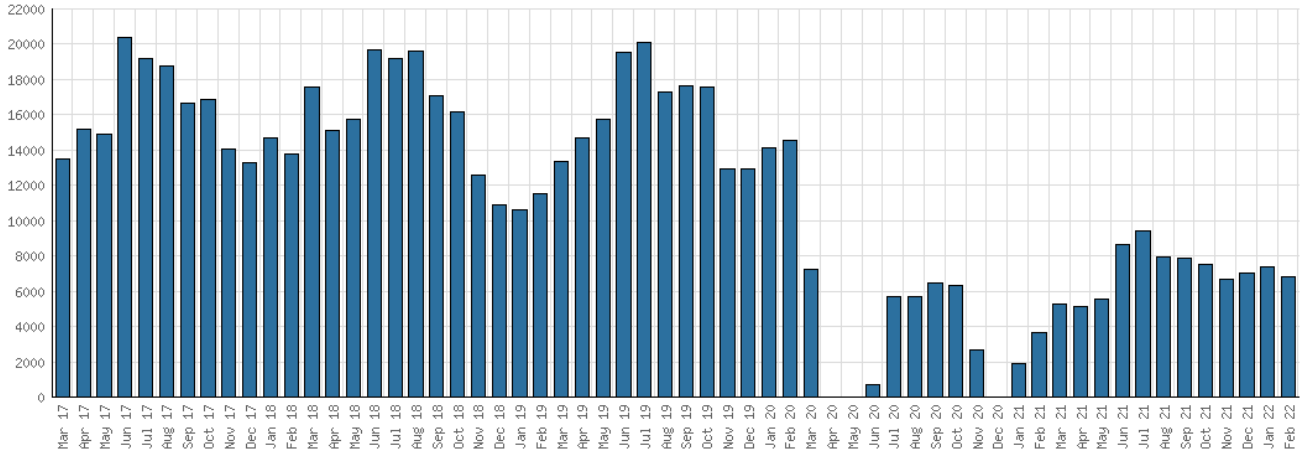
February 2022

	Teen Space	BDL YTD	BDL Year End (Year-over-Year Change)				
			2021	2020	2019	2018	2017
Teen Space Attendance	19	97 (+223%)	706 (-16%)	845 (-80%)	4,172	0	0
In-Person Reference Questions	4	11	13 (+225%)	4 (-96%)	93	0	0
Reference Telephone Calls	0	0	0	0	0	0	0
Online Reference Questions	0	0	0	0	0	0	0

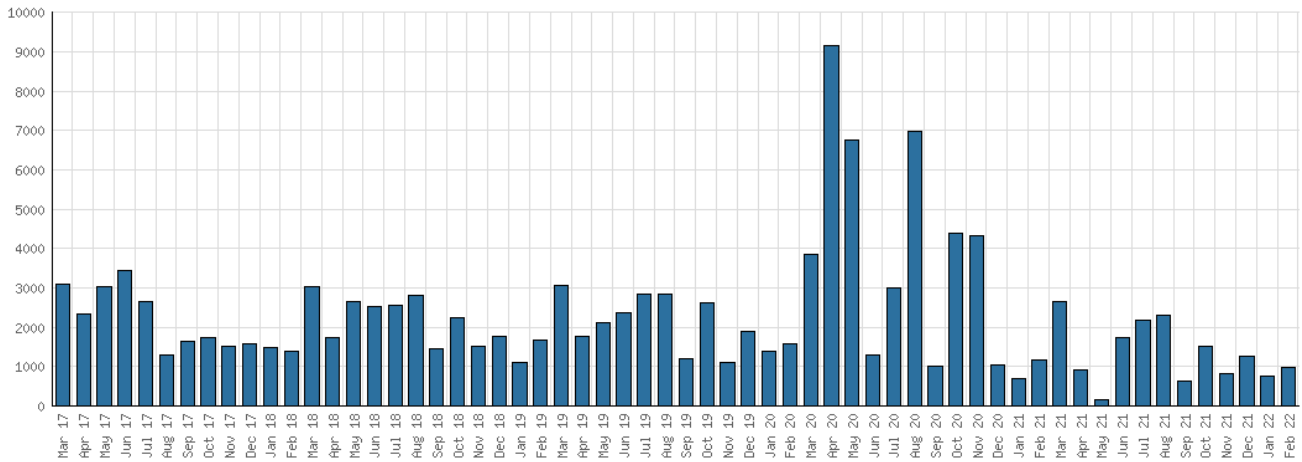
Selected Graphs

5-year Monthly Trends

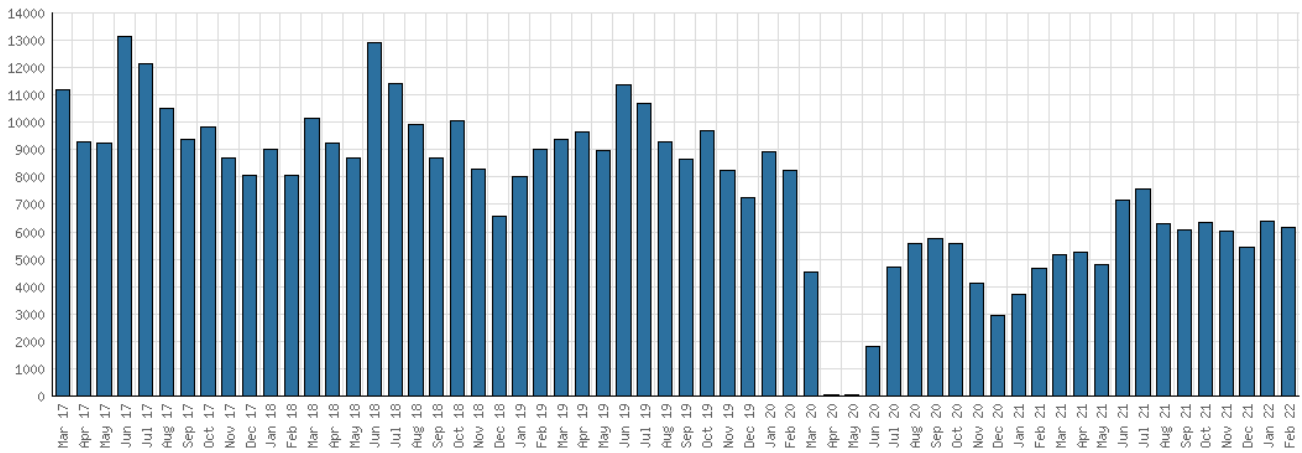
District Attendance



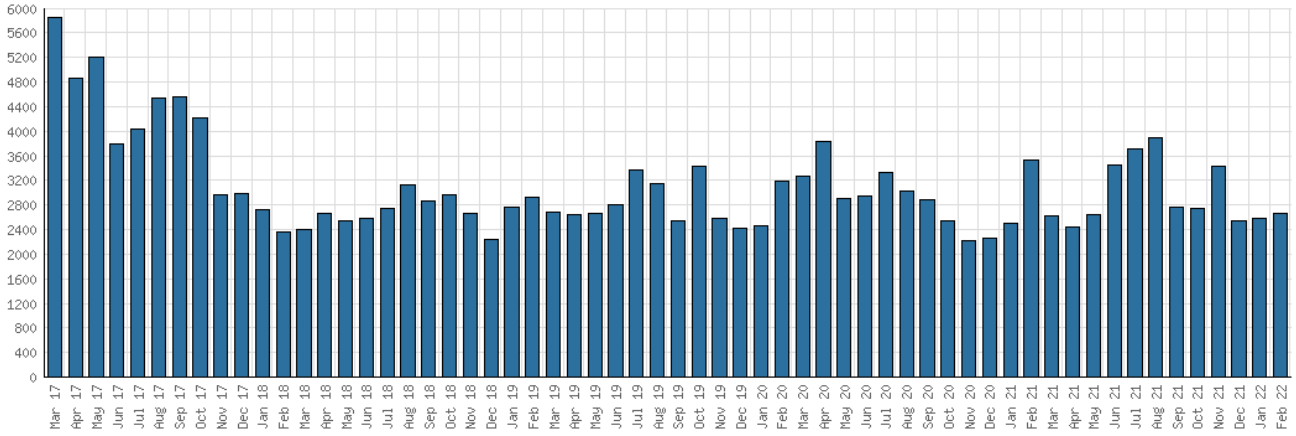
District Program Attendance



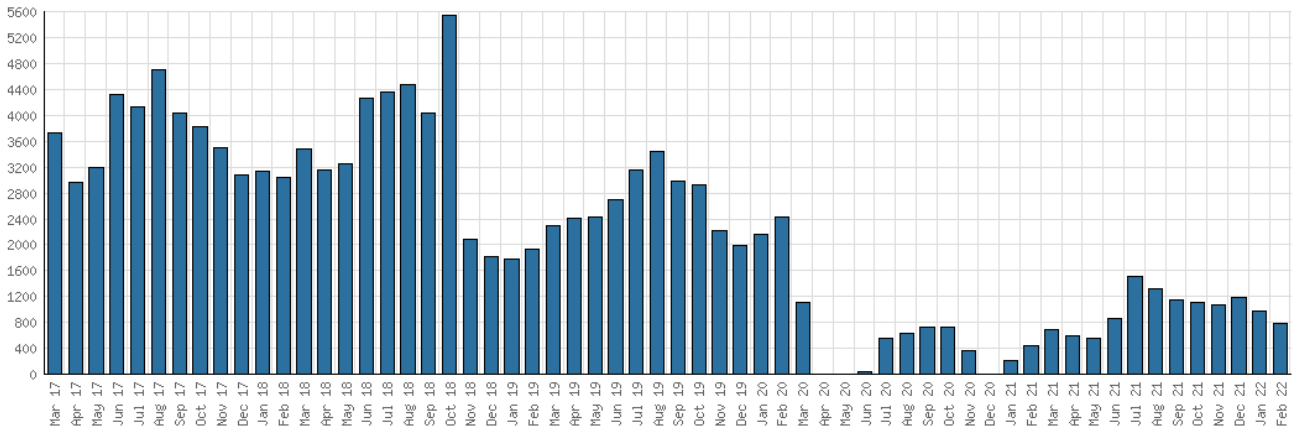
District Physical Checkouts



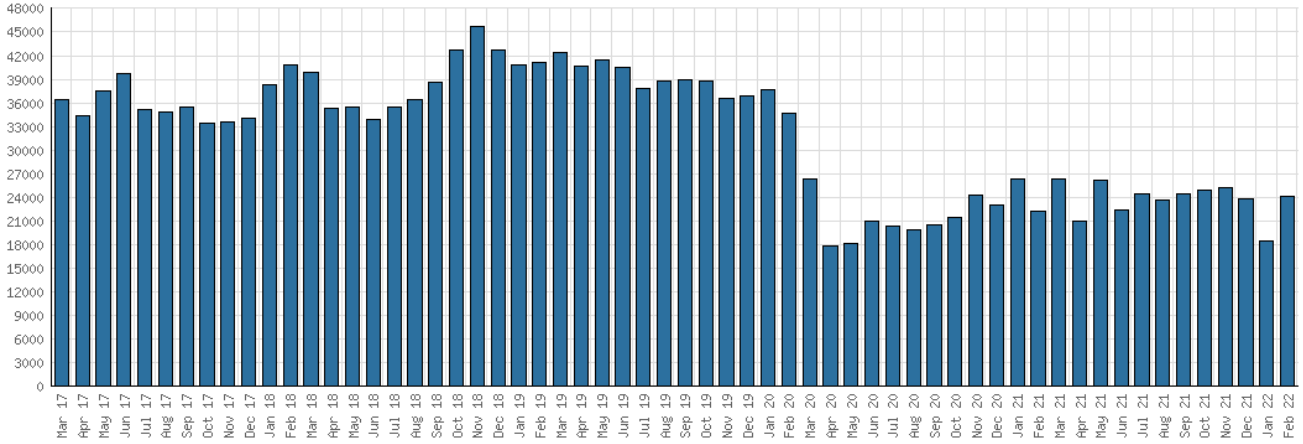
District Digital Usage



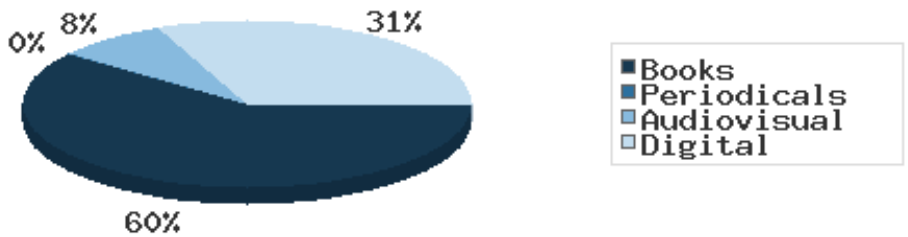
District Use of Library-Provided Computers



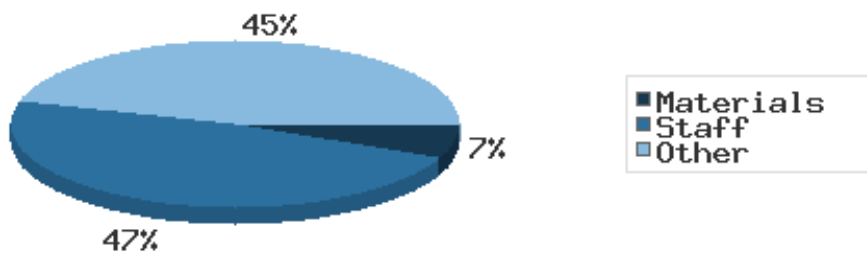
District One-Hour Sessions on Library Wifi



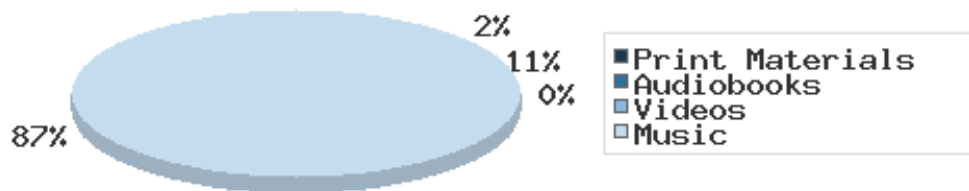
Year-to-Date Materials Expenditures



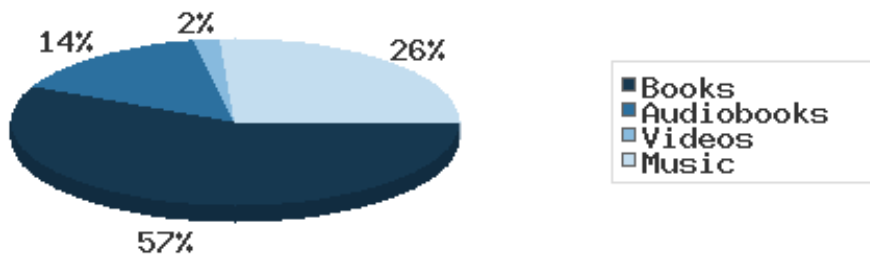
YTD Expenditures in all Categories



Physical Collection



Digital Collection



YTD Usage Breakdown of Digital Services

